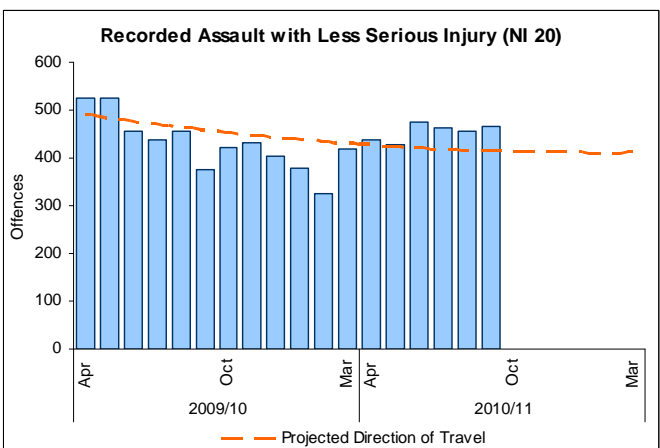
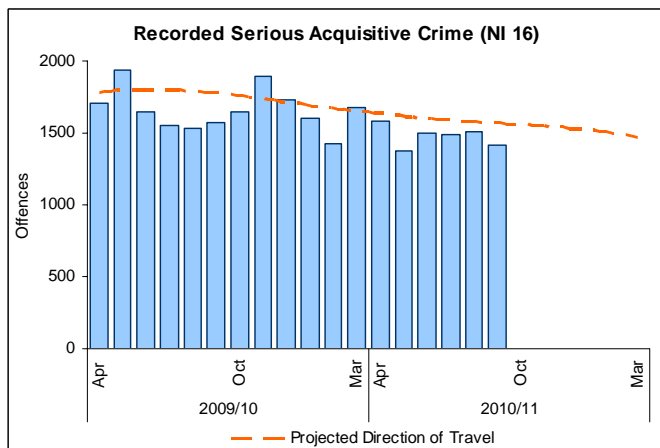


Overall Progress



Why is this a priority

The public have the right to be safe and feel safe in their own home, on the streets and the places they go. Tackling serious crime and diffusing tensions in our communities is vital to people’s quality of life. This is a government and local priority and the performance indicators are part of the LAA.



Overall Progress to date and outcomes achieved

1) Overall Summary: (Acquisitive crime with a focus on domestic burglary)-

Overall assessment of progress against the outcome is fair and shows that the city is now moving in the right direction. Recorded crime figures at September 2010 suggest that Leeds can achieve the 2010/11 performance target, with an estimated out-turn of 18,100 offences. The falling trend in serious acquisitive crime (an aggregated target) however, masks a trend of increasing theft from motor vehicle offences (a component of the aggregated target). This increase is offset by falling burglary dwelling, robbery and theft of motor vehicle offences.

The sustained trend for falling offence acquisitive crime numbers continues, down 10.7% (1068 fewer offences) against previous year. The main focus within this indicator has been on securing improvements in recorded domestic burglaries. The medium term trend for falling domestic burglary offence numbers continues, down 16.4% (765 fewer offences) against the previous year. The table below provides an overview of the monthly figures for the last 18 months.

	2008/09	2009/10	Difference
Apr	635	761	126
May	612	914	302
Jun	652	806	154
Jul	654	712	58
Aug	730	727	-3
Sep	774	749	-25
Oct	817	814	-3
Nov	912	940	28
Dec	958	801	-157
Jan	857	814	-43
Feb	737	704	-33
Mar	910	779	-131

	2009/10	2010/11	Difference
Apr	761	653	-108
May	914	570	-344
Jun	806	690	-116
Jul	712	634	-78
Aug	727	689	-38
Sept	749	668	-81

Achievements since the last report

Location-based work

- Proactive target hardening (TH) in our localities of concern has had a positive impact and supports the long term plan of reducing the opportunity for offenders to commit burglary and provides reassurance to victims and their families. This has been demonstrated in the Woodhouse area following intensive TH approaches in partnership with the Police and Operation Titan, where reductions have been sustained as a consequence. A further audit has been undertaken through the burglary tasking group that demonstrates positive outcomes in terms of reducing repeat incidents where TH has been implemented. Although recent funding restrictions have been a reality, tackling domestic burglary continues to be a priority and funding available is being targeted into the areas of highest need where the greatest impact will be seen.
- The ALMOs and BITMO have been tasked with drawing up burglary improvement plans and are reporting progress against activity at a local level through the Divisional Community Safety Partnership.
- The work to engage commitment from registered social landlords and private landlords in securing their properties continues, and has led to their strategic plan including the need to improve security measures in their homes. The landlords are continuing to work with Community Safety on implementing this key area. Additionally, the Designation Order in Richmond Hill has also given opportunity to support all landlords in that area with environmental audits and recommendations as to measures to reduce risks of burglary.
- Two landlords in the selective licensing areas at Richmond Hill have been successfully prosecuted in respect of breaches of licensing legislation, the latest being fined £12,000
- Woodhouse Carr Plan - A detail neighbourhood action plan is currently being progressed involving a range of stakeholders. Plans include joint student and PCSO patrols, affording the opportunity to engage students and offer basic crime prevention advice as well as determine issues of concern to them. A number of planned Operations targeting insecure premises are being planned. CASAC are also putting in lap top safes in this locality.

Work with victims or those at higher risk

Computrace

- All licences received and delivered to the Police divisions, have now been rolled out targeting hotspots as part of a controlled distribution into this years student intake year. The scheme was re-launched in September to target both new students, but predominantly those returning to study in Leeds. This included outreach into key residential locations including Sky Plaza, the Rose Bowl and the centre of Headingley. 2 staff from the Neighbourhood Policing Team (Belle Vue) are responsible for ensuring that a consistent approach is adopted and direct liaison with the students. In addition, a poster campaign directed at burglars that attend appointments with YOS, Probation and Police has been produced warning them that computers are being tracked.

Campaign

- In September, a seasonal crime reduction campaign 'Which House Would You Burgle?' in was rolled out. Targeting large and medium companies throughout the city, messages were cascaded to over 90,000 employees via their intranets, newsletters, wage slips.

Student Crime Prevention Initiatives

- In preparation for the return of 2nd year students in September a range of crime prevention initiatives have been formulated to address student vulnerability.
- A WalkSafe Operation ran for two weeks involving WYP, Safer Leeds, the Students Unions and the 2 University's security staff. This provided high visibility presence along with crime prevention advice on key routes and areas of high footfall.

Work with offenders or those at higher risk

- In North West Leeds, a pilot project focussing on offenders, their family and associates has been established. Partner intelligence has been used to identify those individuals causing the most harm, these have been prioritised and a 'family intervention plan' has been formed. SignPost now have two dedicated

Improvement Priority – TP-2a. Creating safer environment by tackling crime

Accountable Officer – Neil Evans

Apr 09 – Sep 10

social workers co-located with the Neighbourhood Policing Team (Belle Vue) and are working in conjunction with the Police. There is an ongoing focus on Hyde Park / Woodhouse although the team can work with other families in the North West division if they meet the criteria. Following a recent police operation on the Hawksworth estate, a number of families on this estate have been identified and referred for intensive work.

Integrate Offender Management (IOM)

- The IOM cohort continue to be selected with burglary offending as a clear priority, the performance tracker continues to show positive outcomes in regard to reducing reoffending across the identified group.
- The Leeds IOM service is linked directly to Police Divisions. A Police Inspector coordinates Case Management at Divisional level and is supported by two commissioned Case Managers per Division.
- Officers responsible for IOM at Commissioning and Operational levels report fortnightly to the Burglary Intelligence and Tasking meeting ensuring proper co-ordination.
- Support and commitment from Social Care has improved. Connections at case conferencing have been made at a local level and strategic planning around linking the proposed new ASBU teams and health-well being teams is being progressed.

Challenges/Risks

- Securing continued investment and partnership buy-in to support key activity and targeting resources in areas of need.
- Securing continued investment for the development of the Safer Leeds Performance and Intelligence Unit, ensuring that it has experienced specialist staff to deliver on partnership intelligence requirements
- Co-ordination and management of multi-agency intervention plans for those emerging problematic offenders causing the most harm.
- Longer term impact of the economic recession and potential for this to impact on crime levels, including burglary.

2) Overall Summary: *(Assaults with a focus less serious injury)*

Overall assessment of progress against the outcome is fair. Recorded crime figures at September 2010 indicate a strong likelihood that Leeds will meet its performance target; with an estimated out-turn of 5,400 offences.

Performance shows a reduction of 1.5% (42 fewer offences) against previous year. Projections are stable but the trend for increasing offence numbers in North East Leeds is now having an impact on citywide performance.

Projections until March 2010 indicate that the long-term trend in monthly offence numbers could now level out, with North East Leeds projected to exceed their 2009/10 out-turn. To try and address this concern, an intensive operation is being planned for delivery in late October early November called the Dark Nights Campaign. This will include targeted work on property security, additional police resources in localities during the late evenings and pro-active advice campaigns to the public.

Achievements since the last report

- World Cup plans around alcohol related violence implemented successfully
- The number of assaults in the city centre on Friday and Saturday nights has fallen by 75% since the launch of the Street Marshalls scheme, which sees door staff from licensed premises in hotspot areas on the street alongside NPT officers; special constables and PCSO's. Since June there have been only 2 violent crimes recorded on the streets in the 3 zones and no evidence of dispersal of violence into the other areas of the city.
- A new Licensing Matrix system is now in place which identifies premises experiencing high levels of crime so problems can be addressed before escalating. Consideration is being given to how Leeds Best Bar None can work alongside the 'matrix' system. Test purchase operations both at off and on licence premises in the city centre have had only a small number of failures.

Improvement Priority – TP-2a. Creating safer environment by tackling crime

Accountable Officer – Neil Evans

Apr 09 – Sep 10

- Leeds Churches Street Chaplains (supported by Safer Leeds; City NPT; and BTP) continue to operate on the first 2 Friday nights of the month.
- Since mid August City NPT have been given the power (for a 18 month period) by LCC Highways to implement a temporary road closure of Upper Briggate on Friday and Saturday nights, when the congestion of both traffic and pedestrians presents a threat to access and public safety. To date this has been utilised over 8 weekends and is proving to be highly effective with both local businesses and the public. There is also potential for its use to be considered in other hotspot areas.
- Working with licensed premises to tackle crime and disorder as well as improving the management of licensed premises, there are now 25 PubWatch schemes across Leeds. Each scheme has a number of members ranging from 5 to over 60. This expansion has led to improved communication and activity around individuals and groups causing the most harm in and around licensed premises. Dealing with those who are anti-social has been critical to getting partners involved and thereby making environments safer for residents and visitors to the city.
- Commencement of voluntary programmes with domestic violence perpetrators focused on alcohol and anger management and targeted at perpetrators who do not fit the IDAP demographic. This has resulted in approximately 12 assessments of perpetrators being identified a package of interventions that can be put in place to reduce risk to victims and assist in behaviour change.
- 'Making Safe' programme with housing providers to provide alternative accommodation to male perpetrators of abuse extended to city-wide remit to focus on domestic violence perpetrators who return to home setting and re-offend.
- There has been a considerable improvement in attendance at MARAC meetings by key partners with nominated individuals now identified for those agencies not previously attending. Ongoing review of attendance.
- A protocol has been agreed whereby the Children Safeguarding Board will deal with DV homicide reviews of 16/17 year olds and the Adult Safeguarding Board will deal with DV homicide reviews involving 18+. Any cases falling outside the criteria of these 2 Boards will be reviewed by the Leeds Domestic Violence Homicide Group.
- A domestic violence training programme for all Social Workers in Leeds is being delivered. A key component is promoting safe, effective assessments and interventions with domestic violence perpetrators in order to reduce risk to victims and safeguard children. Interim evaluations indicate that the training has better equipped participants to risk assess families where domestic violence is present.
- All 58 Children's Centres (CC) in Leeds are working towards the Leeds Domestic Violence Quality Mark with a target for all 58 to attain Level 1 by Nov 2010. This has included training all CC staff, developing Domestic Violence Guidelines and improving access to safety and support.

Challenges/Risks ii) Assaults with Injury

- Securing continued resources for domestic violence services with particular focus on IDVA support as identified by Home Office review.
- No ongoing funding in place for Taxi Marshall's.
- Negotiating with Probation and C&YPSC to secure secondees from Probation for 2011/12, to further undertake work with DV perpetrators where Child Protection Plans are in place.

Council / Partnership Groups	Safer Leeds		
Approved by <i>(Accountable Officer)</i>	Simon Whitehead	Date	18/10/10
Approved by <i>(Accountable Director)</i>	Neil Evans	Date	9 Nov 2010

Improvement Priority – TP-2a. Creating safer environment by tackling crime

Accountable Officer – Neil Evans

Apr 09 – Sep 10

1) Key actions for the next 6 months				
	Action (Desired Achievements)	Contributory Officer / Partner	Milestone / Actions	Timescale
1	Leeds will be inspected by Audit Commission and HMIC using the generic key lines of enquiry found in the joint inspectorate approach. Safer Leeds will be engaged in the scoping, delivering and reporting of this inspection. At the same time the inspectors will be reviewing Operation Titan.	Simon Whitehead Ian Whitehouse Barry South Neil Evans	Starts – w/c 22/11 03/12 Draft report on findings – 20/12 Report published 28/01	Jan 2011
2	Continued focus on reducing domestic burglary – combination victim, offender and location based activity and operations over the next three months	Simon Whitehead Divisional Commanders	NWL policing activity focussed on organised burglary crime groups. City and Holbeck conducting overt public briefings as part of an ongoing Autumn initiative. North East Leeds introducing cold calling zones in conjunction with Trading Standards. Cross border operations will continue	Oct- Dec 2010
3	Implement, monitor and review community safety neighbourhood management improvement plans. <ul style="list-style-type: none"> ▪ DCSPs to be reviewed and control strategies to be refreshed following JSA 	Simon Whitehead Area Community Safety Coordinators	Management transfer of Area Community Safety Co-ordinators (x5) to Community Safety by October 10 Subsequent local and accountable tasking meeting	2010/11
4	Produce a joint strategic assessment to assist Safer Leeds in identifying and setting out its crime, disorder and substance misuse priorities for next year.	Simon Hodgson	Draft to be presented to the Acquisitive Crime Group in October Findings to be presented to Safer Leeds in November	Dec 2010

Improvement Priority – TP-2a. Creating safer environment by tackling crime

Accountable Officer – Neil Evans

Apr 09 – Sep 10

2) Key actions for the next 6 months – NI 20				
1	Implement recommendations from Home Office Violence against Women and Girls guidelines in relation to offences of domestic violence and sexual assault	Michelle De Souza	Leeds Domestic Violence Strategic Group agreed to oversee a city wide Violence Against Women Strategy 2011-2014. Strategy will be informed by government guidance and local need as identified through the Domestic Violence Profile and consultation with public and service users.	March 2011
2	Part 1 of a Domestic Violence problem profile has been completed providing a baseline position across Leeds. This will be used to inform Part 2 to support the development of the Domestic Violence Strategy for 2011- 2014	Simon Hodgson/Michelle De Souza	Part 2 of the Domestic Violence Profile to be completed	March 2011
3	In partnership with Supporting People undertake a review of domestic violence services to improve responses to local need and deliver VFM.	Michelle De Souza	Commissioning plan being developed Services commissioned and SLAs in place	Dec 2010 May 2011
4	Implementation of evening and night time economy strategy and action plan 2010/11	Cath Follin Inspector Vernon Francis	Sign off of strategy and action plan	March 2011
5	Taxi Marshalls will be in place in the run up to Christmas and New Year, which has previously had a very positive impact on reducing incidents of violence, managed dispersal; rogue private hire operators; reassurance.	Gillian Mayfield	Plan in place Review of programme and outcomes	Nov 2010 Jan 2011

Improvement Priority – TP-2a. Creating safer environment by tackling crime

Accountable Officer – Neil Evans

Apr 09 – Sep 10

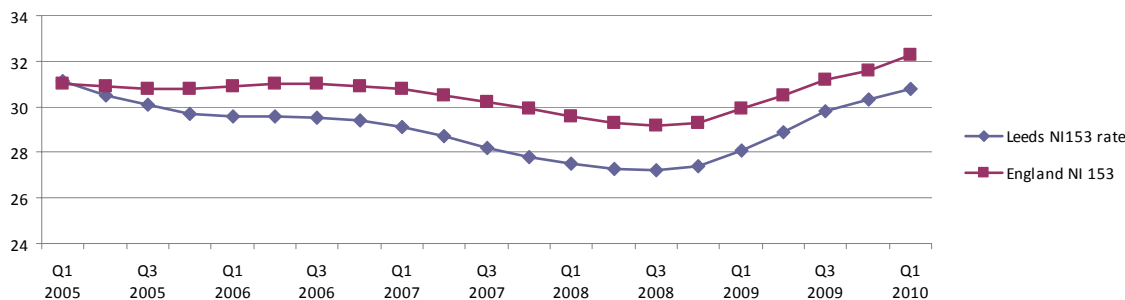
Performance Indicators										
Performance indicators aligned to the Improvement Priority										
Reference	Title	Owner	Frequency & Measure	Rise or Fall	Baseline	2009/10 Result	2010/11 Target	Q2 Result Q2	Predicted Full Year Result	Data Quality
NI 16	Serious acquisitive crime rate	Community Safety	Monthly Number per 1000 population	Fall	27.0 per 1000 population (2007/08)	25.9	25.2	5.7	23.5	No Concerns with Data
NI 20	Assault with injury crime rate	Community Safety	Monthly Number per 1000 population	Fall	8.0 per 1000 population (2007/08)	7.4	7.4	1.8	7.2	No Concerns with Data
N 32	Repeat incidents of domestic violence	Community Safety	Quarterly %	Fall		23.83%	22%	19.67%	20.0%	No Concerns with Data



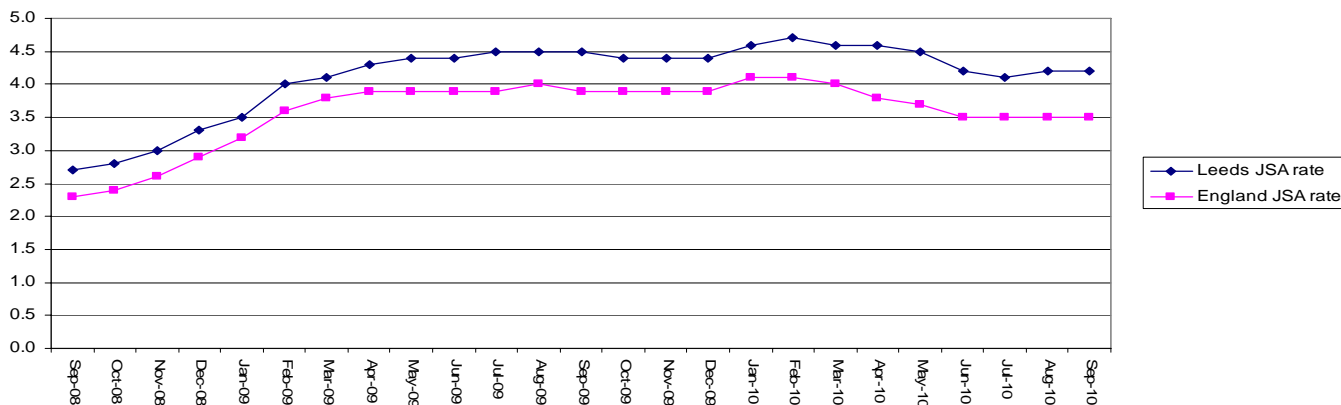
Why is this a priority

Reducing worklessness across the city with a focus on deprived areas is a key improvement priority within The Leeds Strategic Plan (2008-2011). This priority is set within the key strategic outcome of increasing economic activity through targeted support to reduce worklessness and poverty across the city under the 'Thriving Places' theme.

NI153: Working age people claiming out of work benefits in the worst performing neighbourhoods as a % of working age population:



A comparison of JSA claimants in Leeds and England:



Overall Progress to date and outcomes achieved

Overall Progress:

Leeds WACG claimant rate remains below the national average, and has the third lowest JSA claimant rate of the Core Cities, with only Bristol and Sheffield having a lower rate in August 2010.

The most recent Department for Work and Pensions data shows that:

- 22,891 Job Seeker Allowance (JSA) claimants registered in the City - a decrease of 171 on the August 2010 JSA claimant figures which totalled 23,062.
- 4,703 people left the JSA register in September 2010 - a decrease of 787 (14.3%) against the previous month.
- 4,583 people joined the JSA register in September 2010, a decrease of 1,679 (26.8%) against the previous month.
- 5,549 vacancies were notified in Leeds, a decrease of 36 (0.6%) on July 2010 and This 750 (11.9%) less than August 2009.
- the average out of work claimant rate for the 22 target neighbourhoods (NI 153 areas) as of February 2010 was 30.8%, compared to the city average of 13.3% and down by 0.5% on the previous quarter.
- the top 3 notified vacancies in Leeds are currently for care assistants and home carers; heavy goods vehicle drivers; and sales representatives.
- the 3 most current sought after occupations by jobseekers are for sales and retail assistants; goods handlers and storage operatives; and general office assistants and clerks.

The number of 16-18 year olds not in employment, education, or training (NEET) at the end of Sep 2010 was 2150 (9.6% of 16-18 year olds in Leeds) which compares favourably to the same time last year when there were 2462 (10.3%). However, significant work is required to meet the target of 6.8% as the quarterly average for

Improvement Priority – TP-3a. Reduce worklessness across the city with a focus on deprived areas. Accountable Officer – Stephen Boyle Jul 2010 – Sep 2010

January 2011. Work is ongoing to ensure that tracking young people is embedded into working practices. Arrangements for referring and fast tracking of young people to employability schemes are being improved in order to address this key priority for the city.

The latest available DWP data (February 2010) shows that there are approximately 66,880 Working Age Client Group (WACG) people claiming out-of-work benefits in Leeds. Of these, 24,290 (4.5% of the Working Age Population in Leeds) were claiming Job Seekers Allowance (JSA); 31,010 (5.7%) were claiming Employment Support Allowance (ESA) or Incapacity Benefit (IB); and 9,070 (1.7%) were lone parents in receipt of Income Support. The highest concentrations of inactive claimants claiming IB/ESA are in Hunslet, Chapeltown and Cottingley, and for Lone Parents in receipt of Income Support the greatest claimant rates are in South Seacroft, Belle Isle and Middleton.

Ongoing work is taking place amongst partners in Leeds to improve the targeting of resources to areas of most need. An improved approach to the use of information is being developed to support the city's work in tackling unemployment and improving its skills base. This is important in terms of designing and commissioning effective interventions from both the supply and demand side, providing value for money for the tax payer by avoiding duplication in service-provision, and developing a strong sense of partnership and ownership around intelligence-led targets and outcomes. Robust and up to date intelligence will cover data on the scale, nature and location of out of work claimants in Leeds, intelligence on employment growth prospects and analysis of the performance of current interventions.

The impact of job losses has been felt across all sectors and parts of the district. However, the highest claimant rates remain concentrated in the inner city's most disadvantaged neighbourhoods. This is the pattern nationally, but it should be noted that the size of the Leeds Metropolitan District, and the scale of deprivation to relative affluence within it, can serve to dilute the city's overall worklessness position in comparison to some of our statistical neighbours.

Achievements

Apprenticeships:

- 376 apprentices have been appointed to the Council through the Work4Leeds scheme (April 2009 – September 2010), of which 120 are aged 16 -24 yrs.
- 150 (of the 376 posts outlined above) identified for apprenticeships through the redeployment board:
 - 59 posts filled, 30 by 16-24 yr olds
 - 39 posts still within LCC redeployment and selection process
 - 59 posts returned to 'At Risk' team due to vacancies being withdrawn, application criteria, etc.

Future Jobs Fund:

- 263 young people, aged 18-24 years, started in employment through the Future Jobs Fund between December 2009 and July 2010.
- A further 112 job starts have been achieved under Contract 2, to end of September 2010, in addition to which there are 63 offers of employment (awaiting CRB checks, etc) and a further 113 vacancies that are actively being progressed following placement with Job Centre Plus (JCP) (overall programme target to March 2011 is 807 job starts)

Skilled for Success:

- 538 people have been engaged through Skilled for Success since commencement of delivery in September 2009 (target 620 by December 2010),
- 326 learners have started on accredited training courses, with 119 of these achieving qualifications (target 340 qualifications by December 2010)
- 2 of the people accredited through Skilled for Success have progressed into work to date, of target 49 people into work by December 2010

Adult Learning:

- Adult Learning activity is commissioned by the Council from a range of local providers, including colleges and third sector organisations. This includes provision for over 9,000 enrolments onto a wide range of courses delivered in community settings.

Jobshops/Outreach:

- Community Engagement Teams, working in the areas with highest numbers of out-of-work claimants, have supported over 3,700 people since April 2010 to improve their employment prospects. Over 100 have secured jobs. It is expected that the 13,000 employment support interventions delivered in the first two quarters of 2010/11 will enable many more to move into work over the coming months.

Working with Key Employers:

- The Council works closely with employers, developers and investors. It has delivered a number of employment events in recent weeks to link local people to future job opportunities with employers, including

Improvement Priority – TP-3a. Reduce worklessness across the city with a focus on deprived areas. Accountable Officer – Stephen Boyle Jul 2010 – Sep 2010

Morrisons and Waitrose. Recruitment support has also been provided to a wide range of other high profile organisations, including Tesco, O2, Royal Bank of Scotland and NHS Leeds. Bespoke activities have also taken place with Aire Valley Leeds' business base. It is anticipated that the above activity will create over 250 new jobs in the coming months.

- New retail and construction jobs will be created as a number of high profile developments start on site. The Council is working closely with developers and their partners on these schemes to maximise job opportunities for local people and to manage the impact on the city centre's retail sector. These include - Trinity Leeds, due for completion by spring 2013 and expected to create 3,000 jobs; Leeds Arena, due to start on site in February 2011 and expected to create over 450 jobs; Eastgate Quarter, currently in public consultation regarding a revised programme of works but expected to create between 4,000 and 5,000 jobs in the coming years.

Challenges/Risks:

- 25% of the Leeds workforce is employed in the public sector, therefore, public sector expenditure cuts could have a significant impact on employment rates and the local economy.
- The provision of skills and employability programmes are subject to the outcome of the Comprehensive Spending Review (announced on 20 October 2010), which may have an impact on the scale and nature of provision.
- Uncertainty about the impact of changes locally that will result from the Governments' welfare reforms, including the introduction of the Single Work Programme.
- Due to the current economic climate and public sector cuts there is a high risk that current targets will not be fully achieved.

<u>Council / Partnership Groups</u>	Worklessness Strategic Outcomes Group		
<u>Approved by</u> <i>(Stephen Boyle)</i>	Stephen Boyle	<u>Date</u>	
<u>Approved by</u> <i>(Neil Evans)</i>	Neil Evans	<u>Date</u>	

Improvement Priority – TP-3a. Reduce worklessness across the city with a focus on deprived areas. Accountable Officer – Stephen Boyle Jul 2010 – Sep 2010

Key actions for the next 6 months				
	Action (Desired Achievements)	Contributory Officer / Partner	Milestone / Actions	Timescale (2010/11)
	Deliver interventions to support young people into employment	Stephen Boyle LCC / Ian Hunter, Jobcentre Plus	<ul style="list-style-type: none"> • Targets to be set for apprenticeships through the Work4Leeds initiative based on confirmation of funding. • 544 jobs delivered through Future Jobs Fund by end of March 2011– contract 2 	Q3 Q2 Q4
	Deliver vocational and basic skills training to support people into employment	Stephen Boyle LCC	By December 2010: <ul style="list-style-type: none"> • 620 people engaged through Skilled for Success • 340 qualifications achieved • 49 people into work • Skilled for Success programme extension and additional funding agreed beyond December 2010 	Q3 Q3 Q3 Q3
	Establish Employment Leeds as a single point of contact for employers	Stephen Boyle LCC	<ul style="list-style-type: none"> • LCC/ERDF funded proposal to be submitted to Yorkshire Forward, with a view to project commencing Jan 2011 • Improved engagement with employers • Community benefits (training and jobs) delivered through procurement resource 	Q2 Ongoing Q3
	Support strategic and locality partnership working to reduce worklessness with a focus on neighbourhoods with the highest claimant rates	I Hunter JCP	<ul style="list-style-type: none"> • Develop integrated performance reports across partners to monitor effectiveness of interventions • Develop a portfolio of intelligence-led products to inform and improve the targeting of employment and skills interventions to neighbourhoods and localities in most need • Develop Area Action Plans to better target neighbourhoods with the highest levels of unemployment in the city and monitor performance • Review commissioning strategies and targeted outreach provision in light of performance reports and economic conditions 	Ongoing Q3 Q3 Q3/Q4

Improvement Priority – TP-3a. Reduce worklessness across the city with a focus on deprived areas. Accountable Officer – Stephen Boyle Jul 2010 – Sep 2010

Performance Indicators										
Performance indicators aligned to the Improvement Priority										
Reference	Title	Owner	Frequency & Measure	Rise or Fall	Baseline	2009/10 Result	2010/11 Target	Q2 Result	Predicted Full Year Result	Data Quality
JSA Rate (New Measure)	Working age people claiming Job Seekers Allowance	Regen	Monthly %	Fall	4.8% (June 09) 4.1% (England rate, June 2009)	N/A	3 year target to be agreed through Worklessness Strategic Outcomes Group	4.2% (<u>Leeds Rate, Sept10</u>) 3.5% (<u>England rate, Sept, 2010</u>)	4.5%	Data is available on a monthly basis
NI 152	Working age people on out-of-work benefits.	Regen	Quarterly %	Fall	0.3% (Q1 09)	0.1% (Nov. 09)	Ensure a lead over the England average rate of at least 0.3 percentage points by Q2 May 2011	0.1% (Feb. 2010)	0.1%	6 month time lag on DWP data
NI 153	Working age people claiming out-of-work benefits in the worst performing neighbourhoods.	Regen	Quarterly %	Fall	16.9% (Q1 09)	17.4% (Nov. 09)	Narrow the gap between the Leeds out of work claimant rate and the overall rate for the combined NI 153 areas to 16.5% by Q2 May 2011	17.5% (Feb. 2010)	17.5%	6 month time lag on DWP data

NB: Due to the change in economic conditions, DWP enabled local authorities to renegotiate their NI 152 and NI 153 targets. The new targets were proposed by the Worklessness Strategic Outcome Group and approved by the Council's Executive Board and DWP. The targets apply from 1 April 2010. The next update for Q2 2010/11 will be made available in mid February 2011.